

ESTANCIA IV OF VIA VERDE

P.U.D.

IN PART OF SECTION 16, TWP. 47 S., RGE. 42 E.
PALM BEACH COUNTY, FLORIDA
IN 2 SHEETS SHEET NO. 2

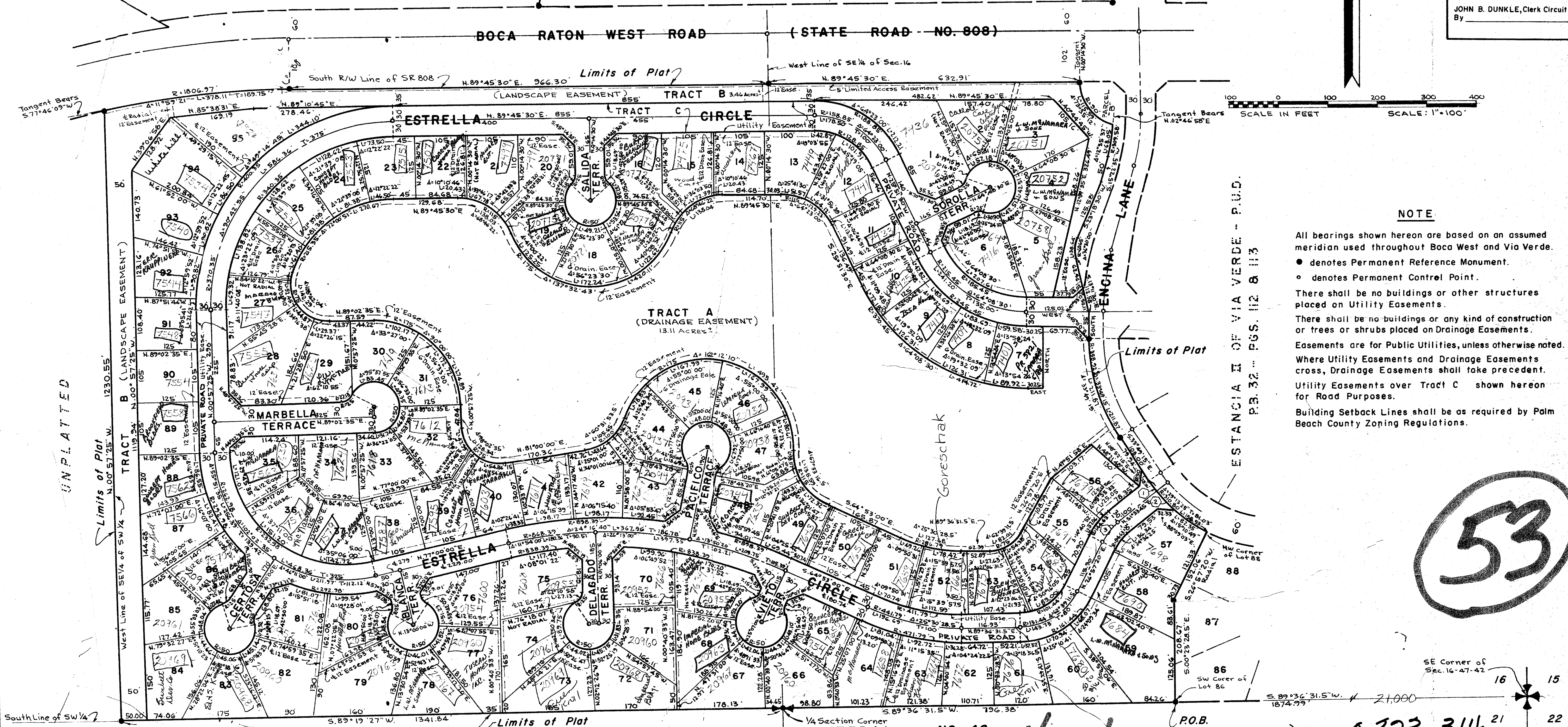
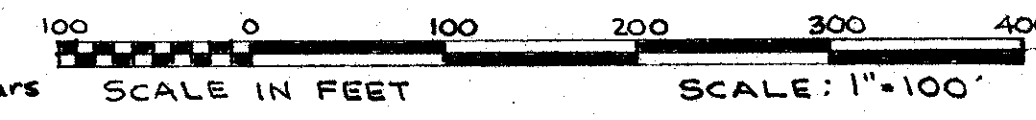
GEE & JENSON
ENGINEERS-ARCHITECTS-PLANNERS, INC.
WEST PALM BEACH, FLORIDA
MAY 1978

BOCA WEST - REPLAT OF HAMLET "S"
PLAT NO. 1 - P.B. 29 - PGS. 243 to 245

BOCA WEST - COUNTRY CLUB ENTRANCE SECTION - PLAT NO. 1
P.B. 29 - PGS. 208 & 209

70

STATE OF FLORIDA
COUNTY OF PALM BEACH
This Plat was filed for record of _____ M.
this day of _____, 1978,
and duly recorded in Plat Book No. _____
on page _____
JOHN B. DUNKLE, Clerk Circuit Court
By _____, D.C.



NOTE

All bearings shown herein are based on an assumed meridian used throughout Boca West and Via Verde.
● denotes Permanent Reference Monument.
○ denotes Permanent Control Point.
There shall be no buildings or other structures placed on Utility Easements.
There shall be no buildings or any kind of construction or trees or shrubs placed on Drainage Easements.
Easements are for Public Utilities, unless otherwise noted.
Where Utility Easements and Drainage Easements cross, Drainage Easements shall take precedent.
Utility Easements over Tract C shown hereon for Road Purposes.
Building Setback Lines shall be as required by Palm Beach County Zoning Regulations.

53

16/47/42

Sidewalk Turnouts

FLOOD HAZARD NO

35/70

CURVE	RADIUS	DELTA	ARC	TANGENT
R=10.00	Δ=04°37'00"	L=25.04	T=12.53'	
R=310.00	Δ=09°25'36"	L=51.14	T=25.63'	
R=114.63	Δ=24°36'25"	L=49.23	T=25.00'	

ESTANCIA III OF VIA VERDE